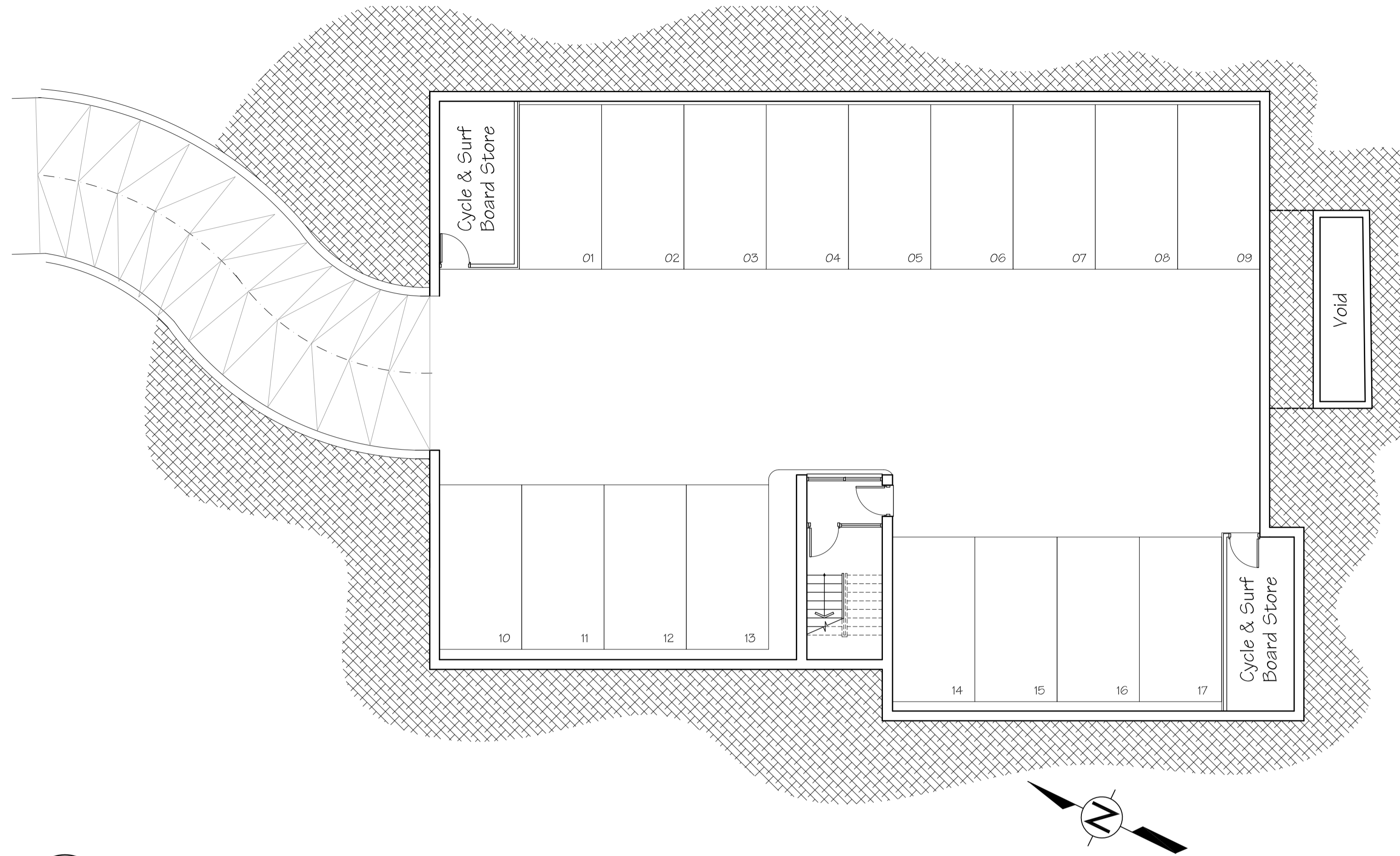
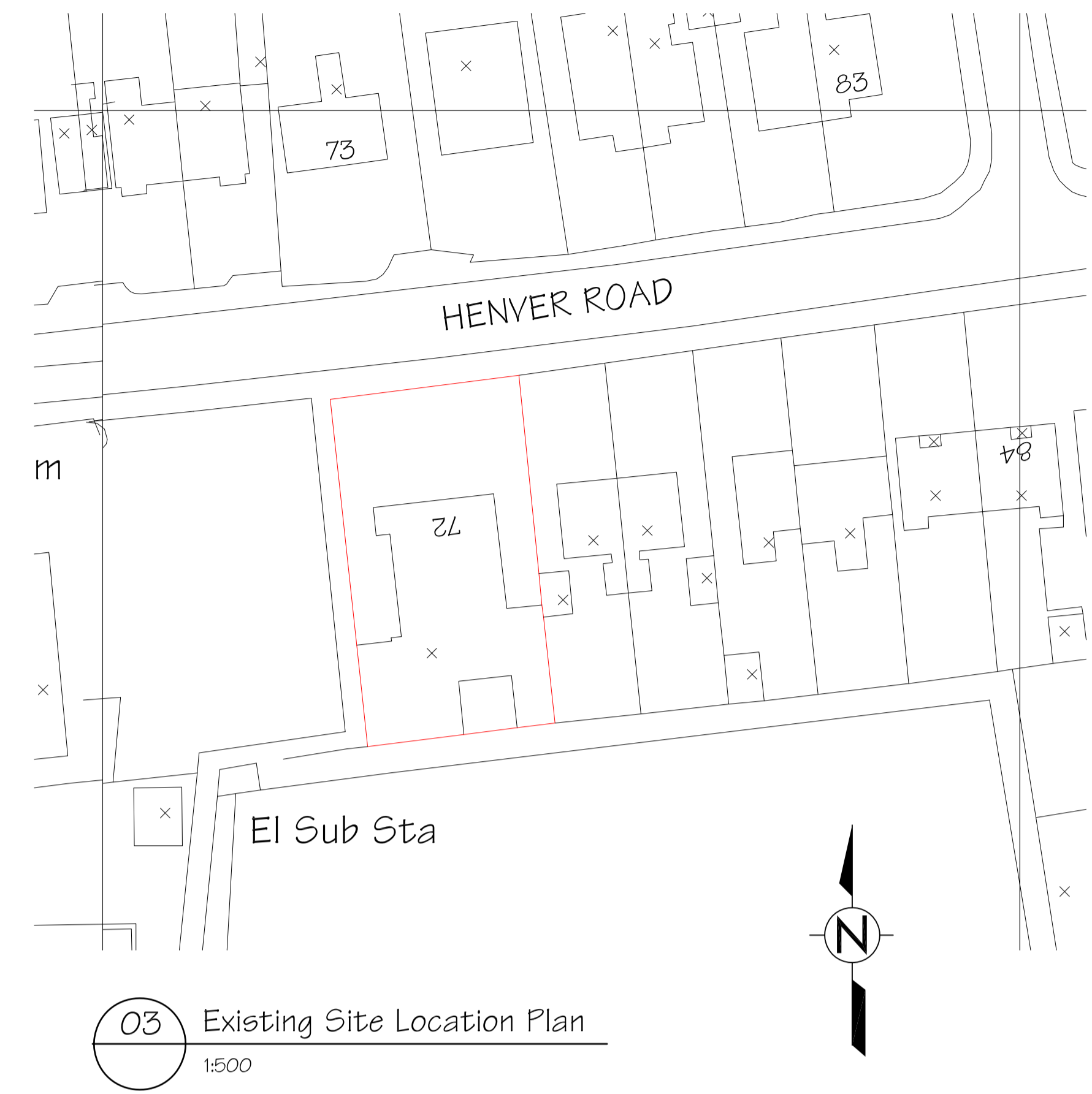


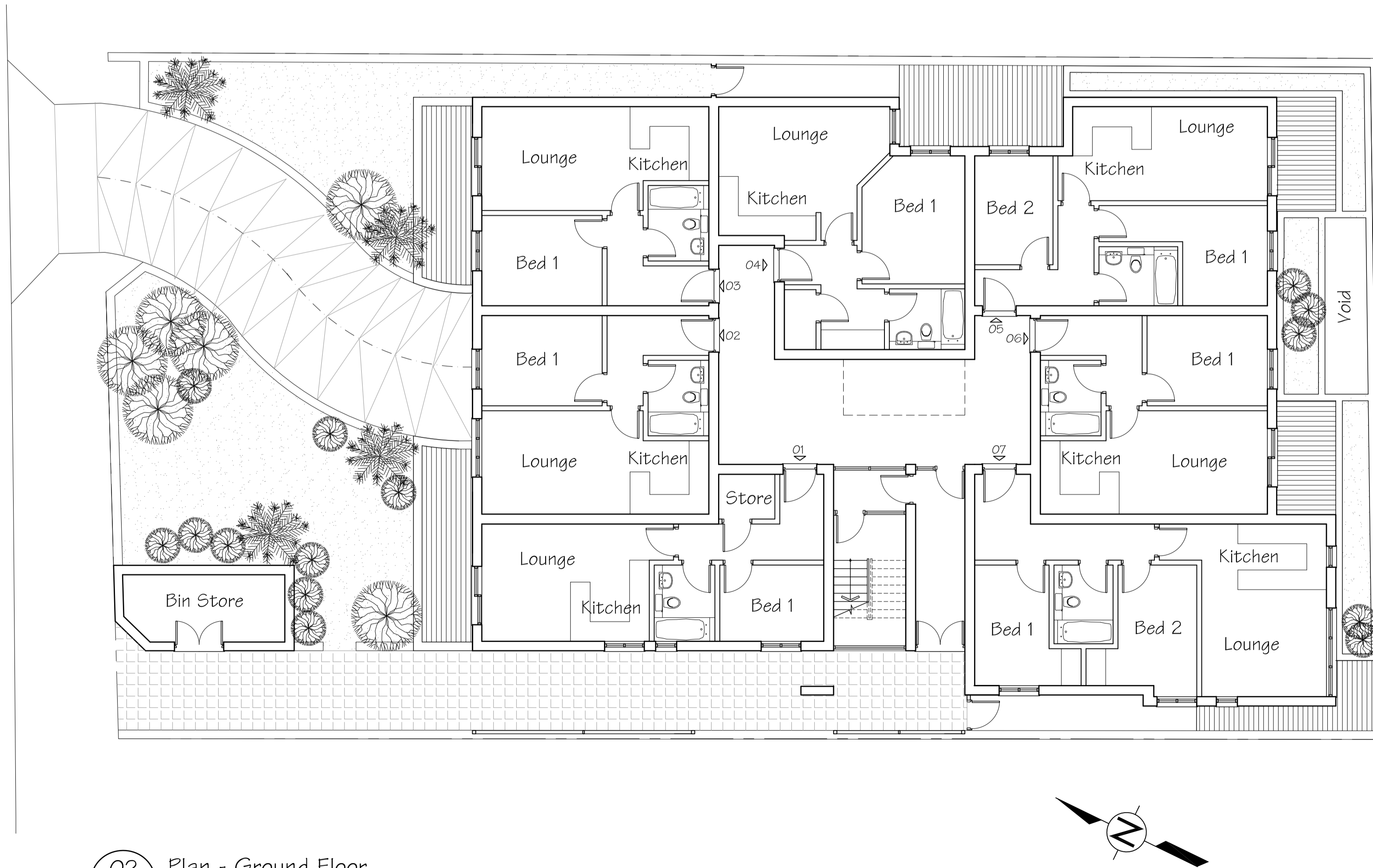
NOTE:
 1. All drawings remain the copyright of Artchart, and cannot be reproduced without approval.
 2. Drawings are not to be scaled.
 3. Documents/drawings transferred by Electronic mail are not to be altered without the consent of Artchart.
 4. Dimensional/level accuracy only applies to the written notation.
 5. The drawings/information issued by Artchart are to be cross referenced where necessary with other Consultants information. If in doubt ask!



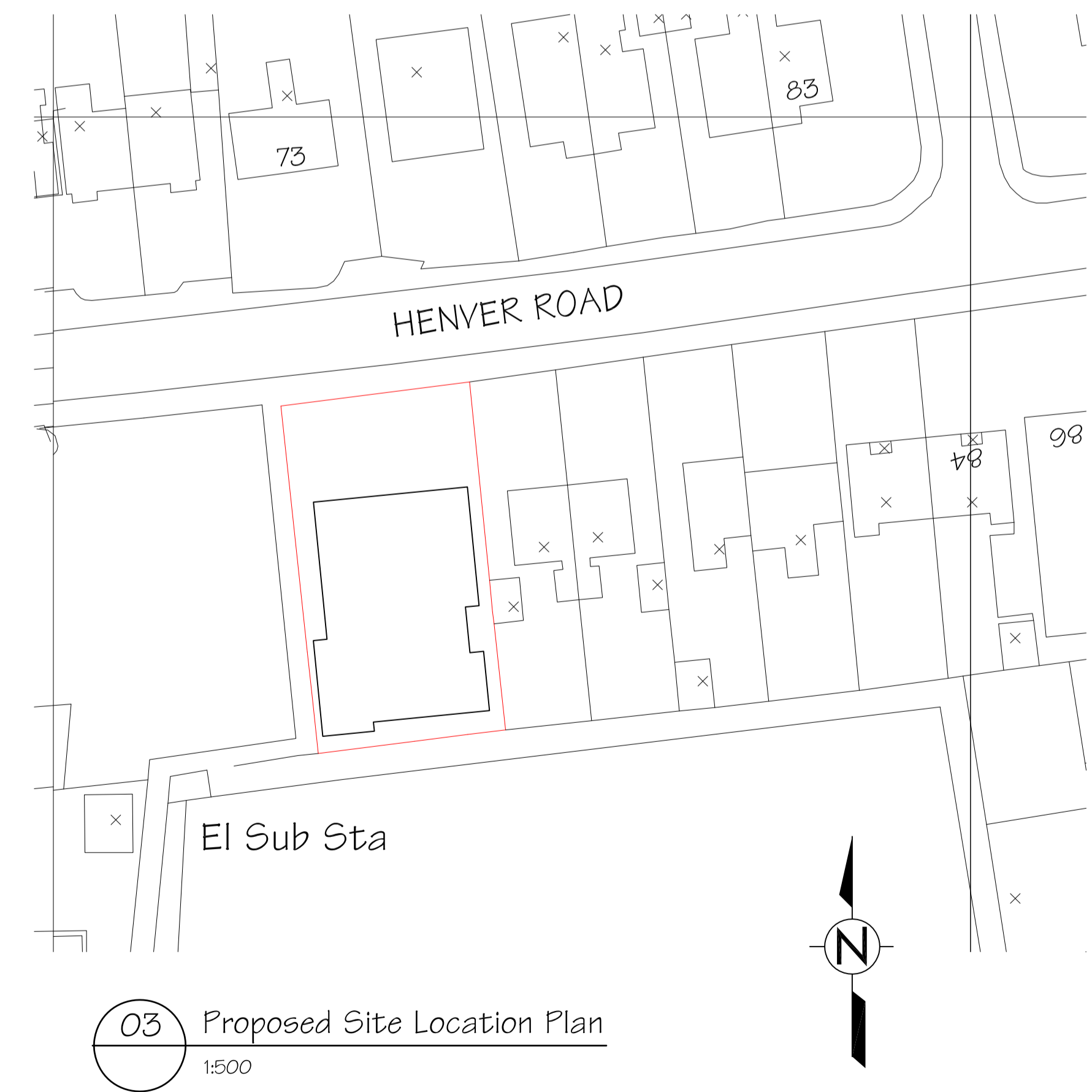
01 Plan - Basement Floor
1:100



03 Existing Site Location Plan
1:500



02 Plan - Ground Floor
1:100



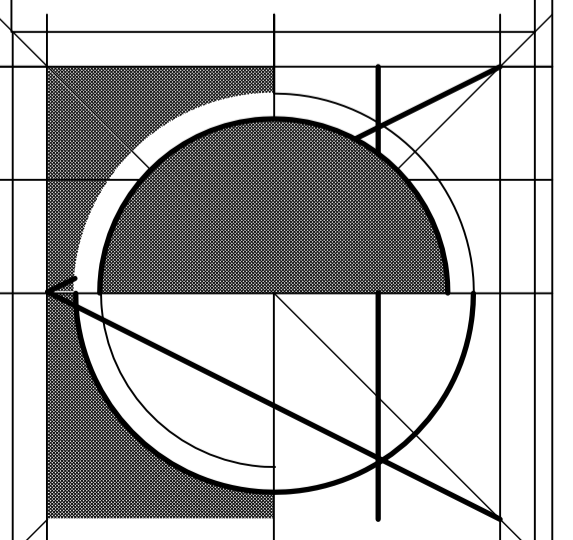
03 Proposed Site Location Plan
1:500

Rev D - 23rd May 2007 - Scheme remodelled at planners request.
 Rev C - 26th February 2007 - Scheme remodelled at planners request.
 Rev Date Note

ARTCHART > Architecture
 Chartered Architects
 Design & Development Consultants

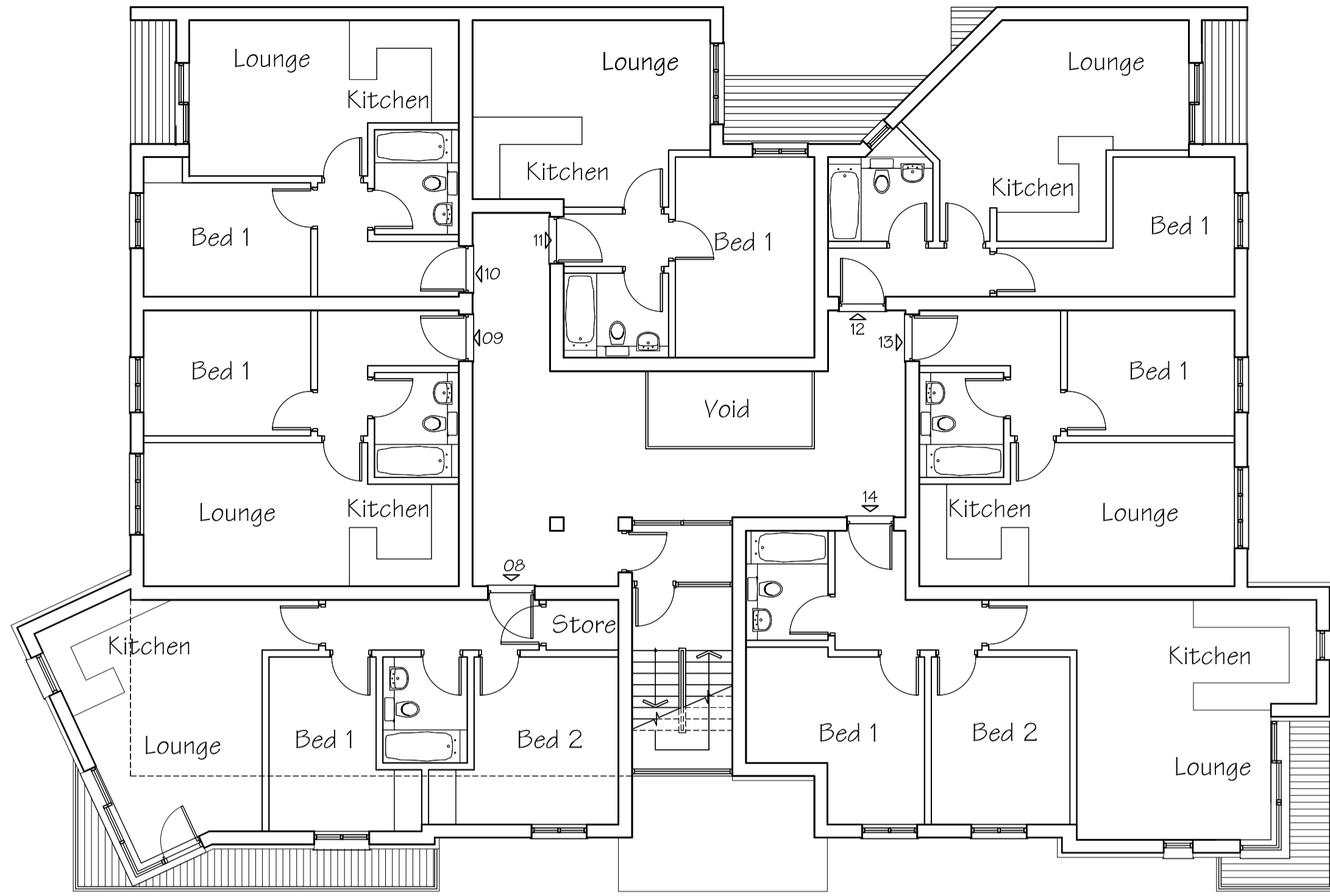
Project No. 06/033
 Drawing No. PL - 001 Rev. D

CLIENT: Penpol Group LTD.,
 PROJECT: Felicia Hotel, Henver Road, Newquay, Cornwall.
 DRAWING: Proposed Floor Plans
 DRAWN: SW
 DATE: Oct 2006
 SCALE: As Shown

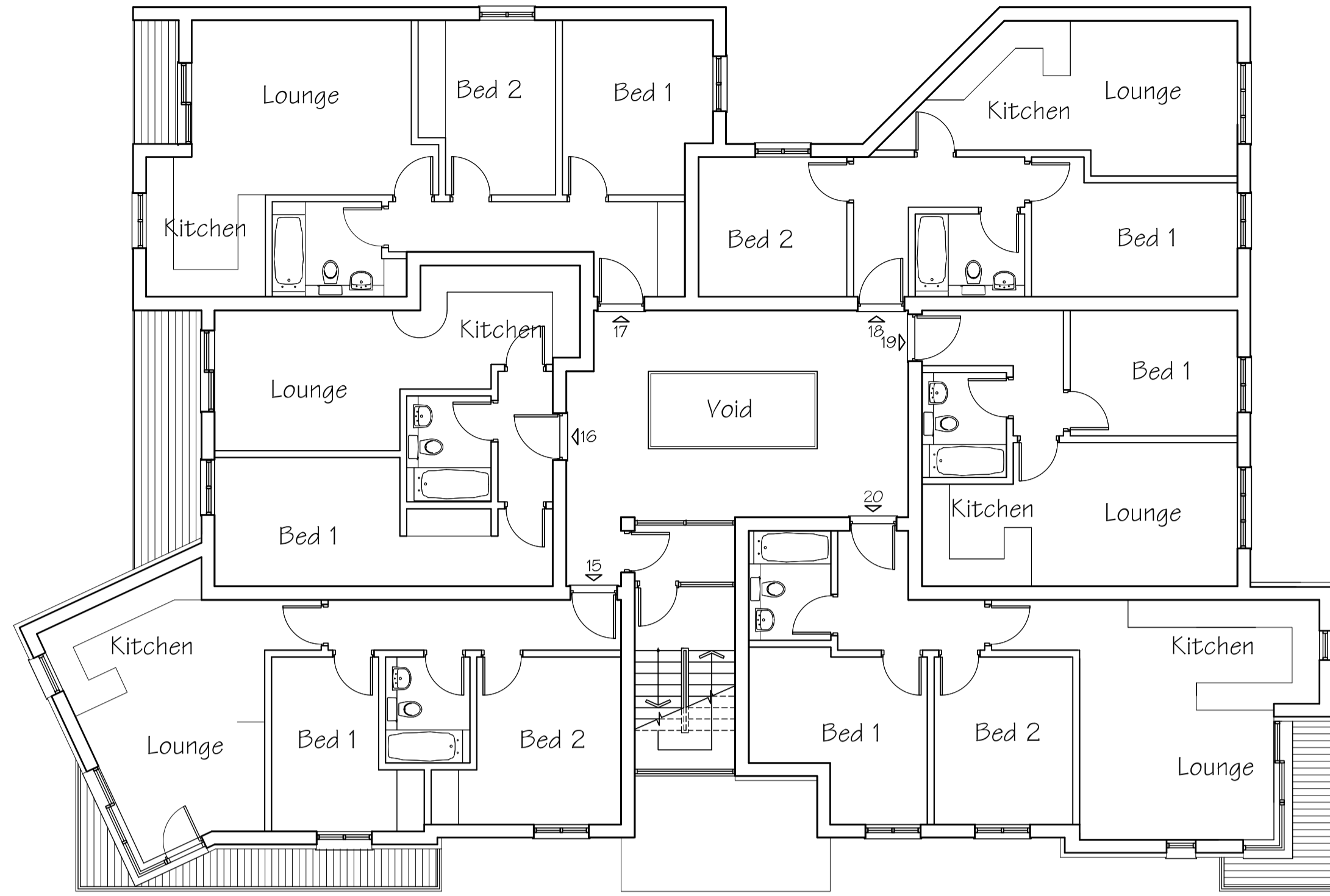


Delynya House, 17A Bank Street
 Newquay, Cornwall, TR7 1DH
 Tel: 01637 875222 Fax: 01637 874222

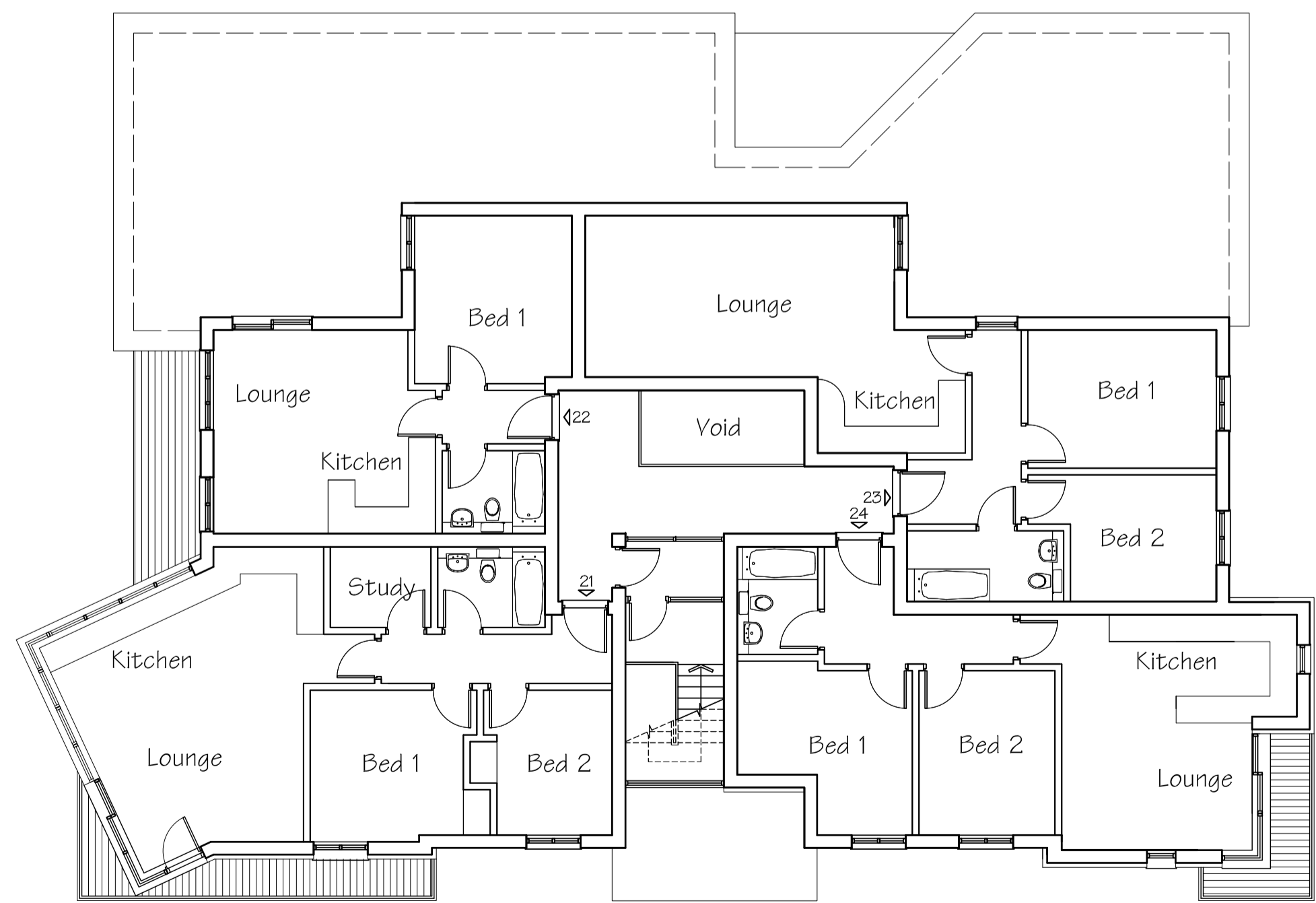
NOTE:
 1. All drawings remain the copyright of Artchart, and cannot be reproduced without approval.
 2. Drawings are not to be scaled.
 3. Documents/drawings transferred by Electronic mail are not to be altered without the consent of Artchart.
 4. Dimensional/level accuracy only applies to the written notation.
 5. The drawings/information issued by Artchart are to be cross referenced where necessary with other Consultants information. If in doubt ask!



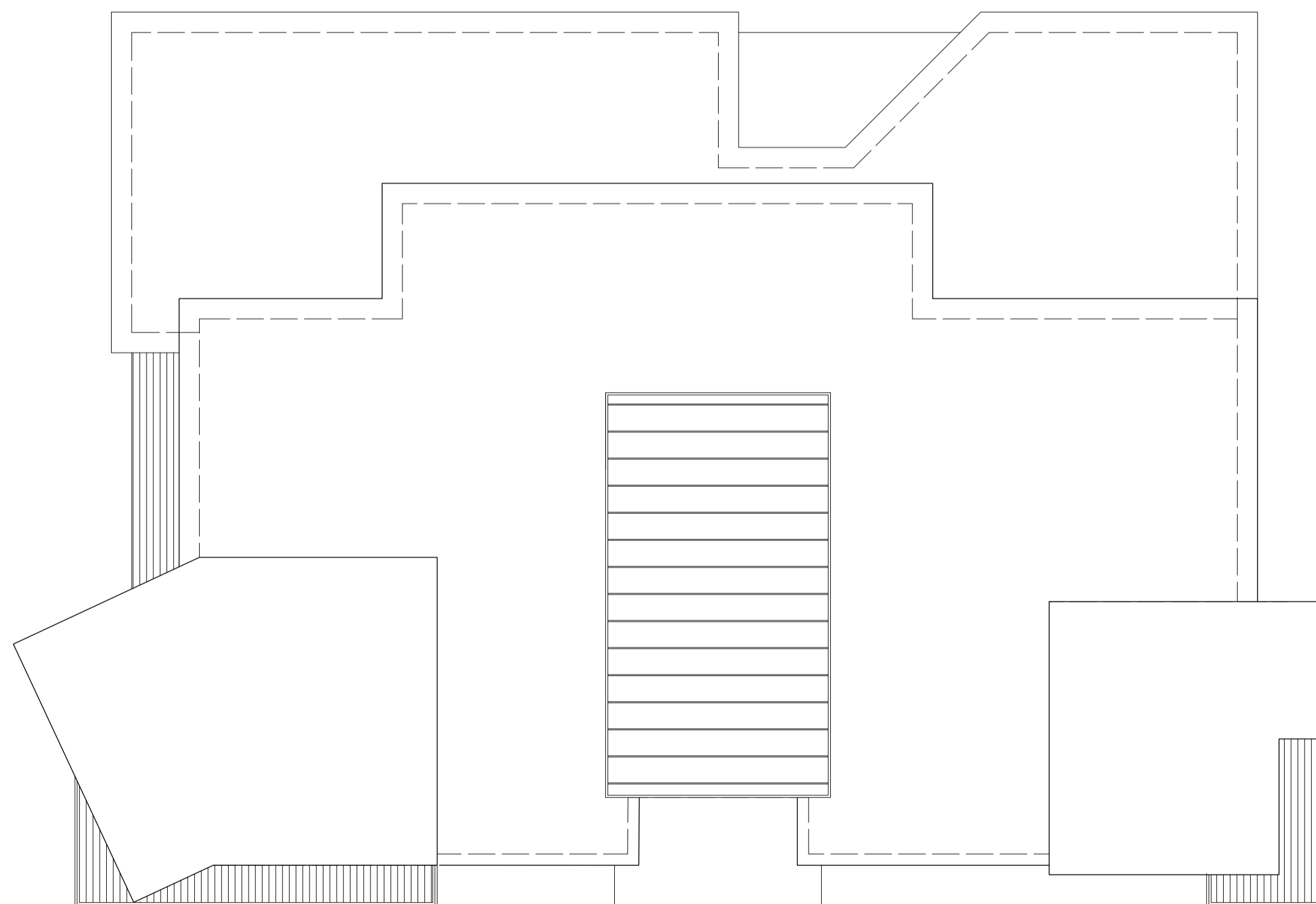
01 Plan - First Floor
1:100



02 Plan - Second Floor
1:100



03 Plan - Third Floor
1:100



04 Plan - Roof Floor
1:100

APARTMENT NET AREAS:

CLASSIFICATION	UNIT No	TYPE	NET FLOOR AREA
H/A	01	1 Bed Apartment	42m ²
H/A	02	1 Bed Apartment	41m ²
H/A	03	1 Bed Apartment	41m ²
H/A	04	1 Bed Apartment	45m ²
O/M	05	2 Bed Apartment	49m ²
H/A	06	1 Bed Apartment	41m ²
O/M	07	2 Bed Apartment	57m ²
O/M	08	2 Bed Apartment	60m ²
H/A	09	1 Bed Apartment	41m ²
H/A	10	1 Bed Apartment	38m ²
H/A	11	1 Bed Apartment	41m ²
H/A	12	1 Bed Apartment	44m ²
H/A	13	1 Bed Apartment	41m ²
O/M	14	2 Bed Apartment	63m ²
O/M	15	2 Bed Apartment	61m ²
O/M	16	1 Bed Apartment	48m ²
O/M	17	2 Bed Apartment	66m ²
O/M	18	2 Bed Apartment	55m ²
O/M	19	1 Bed Apartment	41m ²
O/M	20	2 Bed Apartment	63m ²
O/M	21	3 Bed Apartment	70m ²
O/M	22	1 Bed Apartment	43m ²
O/M	23	2 Bed Apartment	70m ²
O/M	24	2 Bed Apartment	62m ²

TOTAL NET FLOOR AREA= 1209m²

KEY: O/M - OPEN MARKET
H/A - HOLIDAY ACCOMMODATION

GROSS FLOOR AREAS:

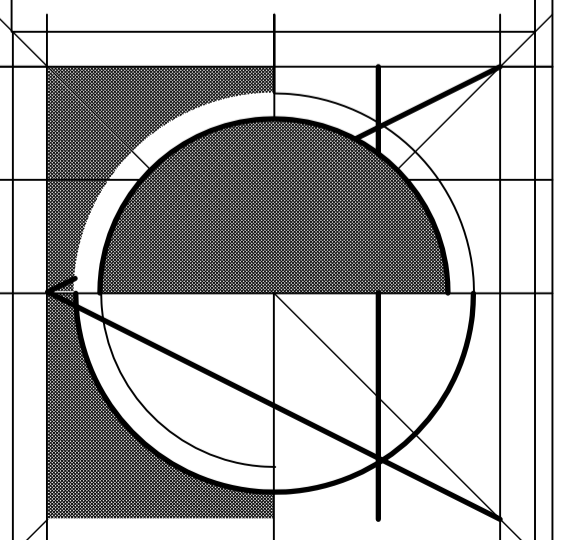
Basement	-	347m ²
Ground Floor	-	408m ²
First Floor	-	407m ²
Second Floor	-	402m ²
Third Floor	-	295m ²
Total	=	1659m ²

Rev D - 23rd May 2007 - Scheme remodelled at planners request.
 Rev C - 26th February 2007 - Scheme remodelled at planners request.
 Rev Date Note

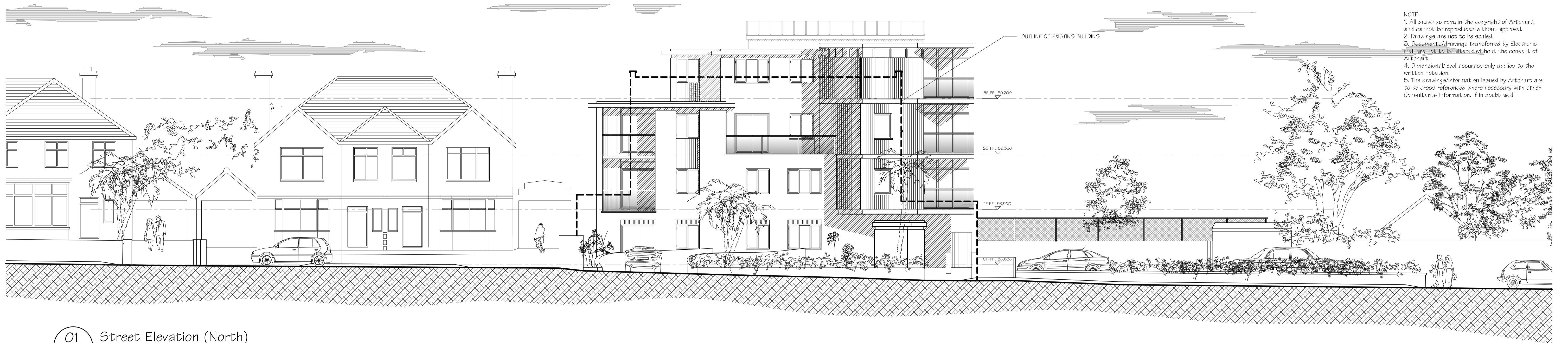
ARTCHART > Architecture
 Chartered Architects
 Design & Development Consultants

Project No. 06/033
 Drawing No: PL-002 | Rev. D

CLIENT: Penpol Group LTD.,
 PROJECT: Felicia Hotel, Haver Road, Newquay, Cornwall.
 DRAWING: Proposed Floor Plans
 DRAWN: SW
 DATE: Oct 2006
 SCALE: 1:100

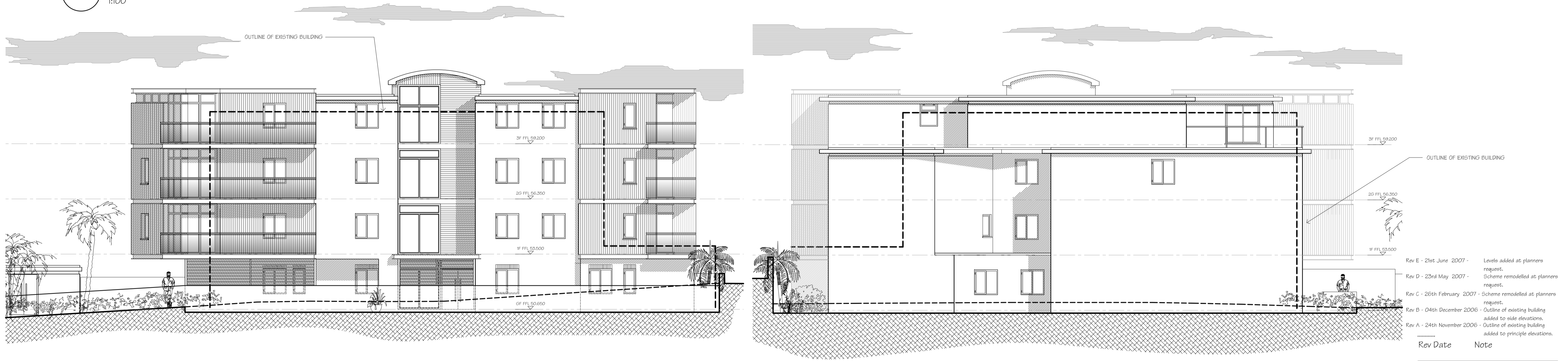


Delvnya House, 17A Bank Street
 Newquay, Cornwall, TR7 1DH
 Tel: 01637 875222 Fax: 01637 874222



NOTE:
 1. All drawings remain the copyright of Artchart, and cannot be reproduced without approval.
 2. Drawings are not to be scaled.
 3. Documents/drawings transferred by Electronic mail are not to be altered without the consent of Artchart.
 4. Dimensional/level accuracy only applies to the written notation.
 5. The drawings/information issued by Artchart are to be cross referenced where necessary with other Consultants information. If in doubt ask!

01 Street Elevation (North)
 1:100



02 Entrance Elevation (West)
 1:100

03 East Elevation
 1:100

NB: Levels in metres related to the corner of telecom cover value 50.000m. See SD-001 for location.



04 South Elevation
 1:100

MATERIAL SCHEDULE:

- WALLS:** Smooth render finish, colours to be agreed, with feature panels of natural finish. Cedar vertical and horizontal planking with stainless steel fixings. Mellow brick header profile head and sill to window and patio door openings. Galvanised 'I' beam sections to break vertical planking to main elevation and stairwell.
- ROOF:** Pitched roof area natural slate (Blue/Black). Flat roof areas high performance single ply-membrane.
- DOORS & WINDOWS:** To areas with vertical planking to be natural timber finish to match. To areas within render wall coat finish to be satin grey aluminium.
- GUARDING RAILS/BALCONIES:** A combination of galvanised 'I' beam support frame with satin grey posts and guardings with glass infill panels.
- RAINWATER GOODS:** Black square section UPVC.
- FASCIAS AND SOFFITS:** White UPVC
- NB:** MATERIAL SAMPLES TO BE SUBMITTED FOR APPROVAL.

ARTCHART > Architecture
 Chartered Architects
 Design & Development Consultants

Project No. 06/033

Drawing No: PL-003 | Rev. E

CLIENT: Pripol Group LTD.,	PROJECT: Felicita Hotel, Henver Road, Newquay, Cornwall.	DRAWN: SW	DATE: Oct 2006
DRAWING: Proposed Elevations		SCALE: 1:100	

Delynya House, 17A Bank Street
 Newquay, Cornwall, TR7 1DH
 Tel: 01637 875222 Fax: 01637 874222